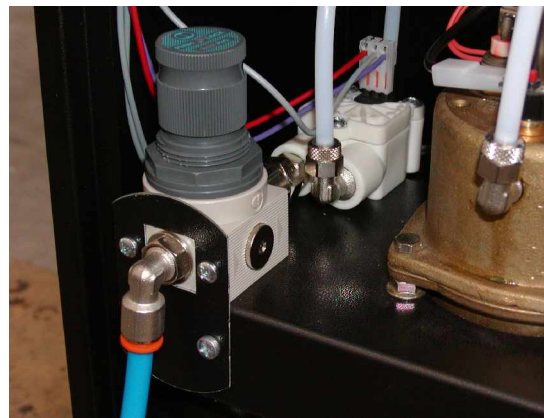


CHANGING FROM TANK TO WATER MAIN CONNECTION



1. Turn off the machine and disconnect the power supply plug.
2. Take off the rear panel
3. Take out the water module platform in the left hand rear corner of the machine by loosening the two screws below.
4. Disconnect the Flow Meter connector; take extra care unplugging so as to not damage the 3 pin male connector on the Flow Meter.
5. Disconnect the hose and the connector from the input side of the red EP5 pump.
6. Disconnect the hose that goes from the Flow Meter down into the base of the machine and into the tank and then remove the tank and the hose from the cabinet.
7. Levering up with a screwdriver, disconnect the Flow meter and take it out; it may be fixed by using silicon adhesive.
8. Disconnect the silicon hoses that go from the soluble electrovalves to the Mixers; taking care because a small quantity of water can come out.
9. Loosen the two screws which fix the boiler support; lift the boiler from the back side and take it out for 5-7 centimetres to be able to operate on the back.
10. Fix the BAR connector to the input side of the pump (pay attention to the right position of the O-Ring) attention to unscrew the nut before introducing it inside the pins.
11. Fix (with two 3.9x9.5 screws) the support that attaches the pressure reducer plate to the pressure reducer
12. Fix the support that attaches the pressure reducer to the boiler module support
13. Position the boiler module support back into its housing. For older style modules there are two locating lugs to fit into holes in the cabinet floor. Newer modules have two small screws to be refitted through the front of the machine.
14. Connect the Volumetric Counter with the tubes of soluble electrovalves
15. If no other mains water tap is present, install the connection tap unit (with inbuilt mesh filter) included in the kit if desired, to the water main supply.
16. Connect the machine with the tap-filter by using the Teflon 6/8 tube and turn on the tap
17. Connect the power supply, turn on the machine, open the door and pull the door micro switch (so the machine starts working).
18. Complete 3 or 4 rinsing (Program button and button 12) operations and turn the pressure regulator fully clockwise and then anti-clockwise leaving in the half open position ensuring that the water is going not higher that the exit water hole in the mixing bowl
19. Check that everything is functional and replace the rear panel.

CHANGING FROM WATER MAIN TO TANK FEED CONNECTION

Tank connection kit is composed of:

- silicon tube with filter and one way valve
- volumetric counter (flowmeter) with exit tube and connection for pump
- 20 or 25 litre tank



1. Turn off the main water
2. Make a selection in order to reduce the pressure in the hydraulic circuit
3. Turn off the machine and disconnect the power supply.
4. Remove the rear panel.
5. Remove the mains water supply tube and swing connector.
6. Take off the pressurised volumetric counter connector lead (take care not to damage or dislodge the 3 pin male connector)
7. Take off the brown silicon tubes that connect the soluble electrovalves to the mixer bowls (take care, a small quantity of hot water could flow out)
8. Remove the H2O boiler module support platform for 10 centimetres by loosening the two screws underneath the water module platform and lifting it rearwards.
9. Remove the screws from the pressure reducer support and the screw that attaches the volumetric counter to the boiler module platform support
10. Loosen the brass Bar connection on the input side of the red EP5 pump
11. Take out the pressure reducer and volumetric counter
12. Take out the pressure reducer support, turn it upside down (so the square hole stays on the lower side) and fix it to the boiler support (To block hole at rear)
13. By using silicon adhesive/sealant or hot glue, fix the new unpressurised Volumetric Counter (part of the kit) in the place of the old pressurised one.
14. Connect the exit rubber connection of the Volumetric Counter with the input side of the EP5 pump
15. Re-position the boiler support in its housing, positioning first the two lugs (older machines) in their housings and fixing it by two screws. Replace screws in front of newer machines.
16. Connect the Volumetric Counter 3 pin plug lead to the Volumetric Counter top
17. Position the tank (full of water) in the base of the machine; connect it to the Volumetric Counter by the silicon tube.
18. Connect the power supply, turn on the machine, open the door and pull the door microswitch
19. Operate 3 or 4 rinsing cycles and turn fully clockwise and anti-clockwise the pressure regulator leaving it in the half open position ensuring the water is going not higher than the exit water hole in the mixing bowl
20. Check that everything is functional and replace the rear panel.